

MONTHLY MEMBERSHIP PROGRESS REPORT

District 11 A2

Results as of: 5/31/2024

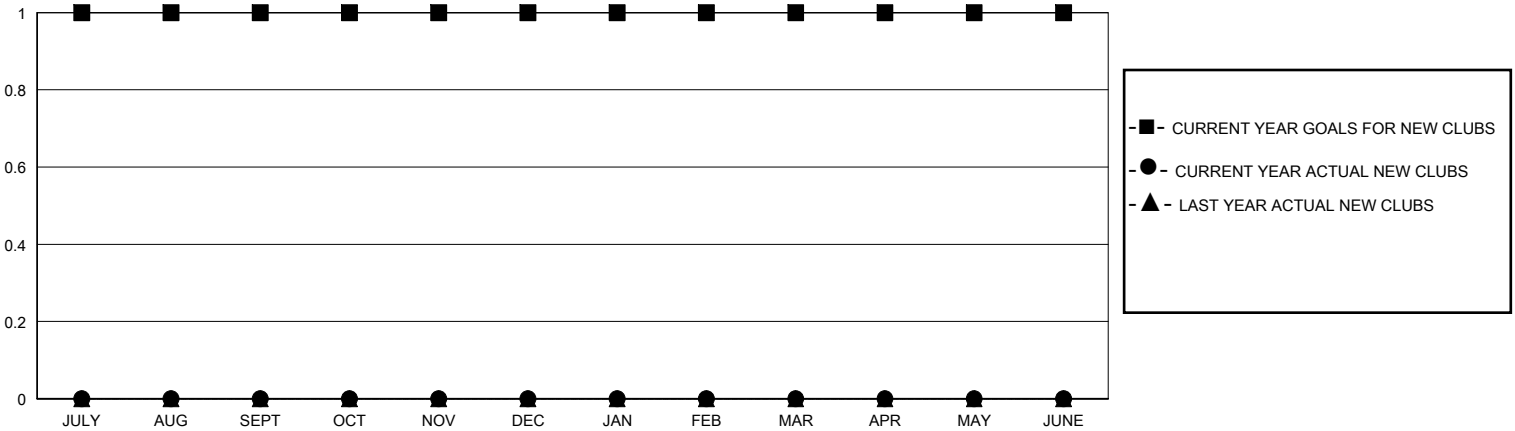
GMT:

LOCATION MICHIGAN

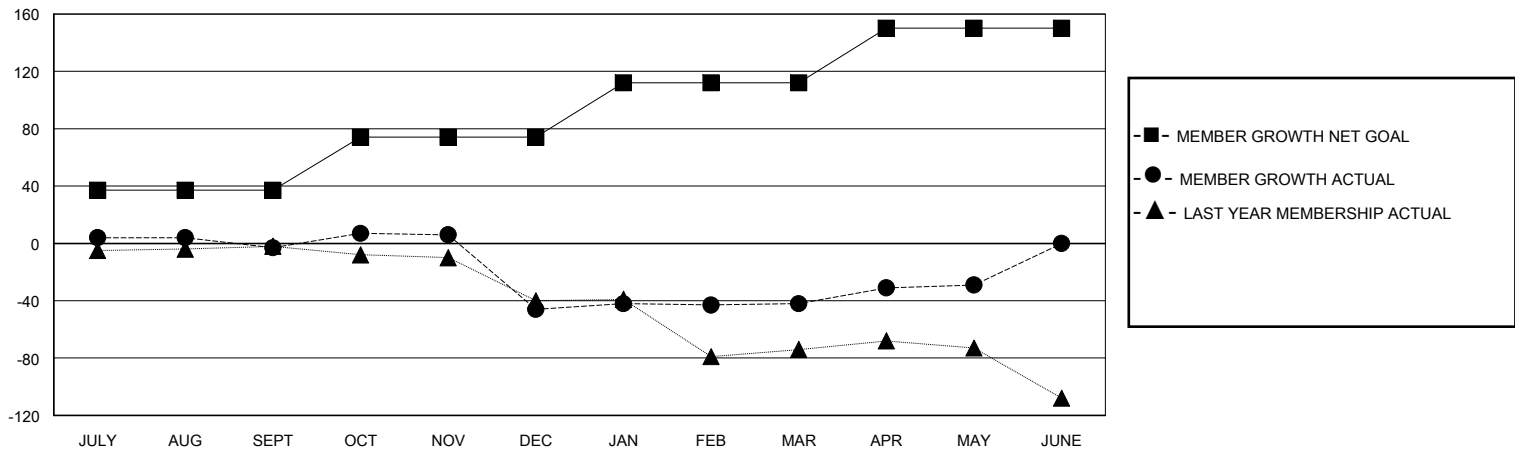
GMT CA

Clubs				Members			
RESULTS FOR 2023-2024				RESULTS FOR 2023-2024			
QUARTER	NEW CLUB GOAL	NEW CLUBS	DROPPED CLUBS	QUARTER	MEMBER GROWTH NET GOAL	MEMBER GROWTH ACTUAL	DROPPED MEMBERS ACTUAL (including transfers)
JULY/AUG/SEPT	1	0	0	JULY/AUG/SEPT	37	35	35
OCT/NOV/DEC	0	0	1	OCT/NOV/DEC	37	34	74
JAN/FEB/MAR	0	0	0	JAN/FEB/MAR	38	43	20
APR/MAY/JUNE	0	0	0	APR/MAY/JUNE	38	35	18

GOALS AND ACTUAL NEW CLUBS CUMULATIVE



GOALS AND ACTUAL MEMBERS CUMULATIVE



DROPPED CLUBS: 1	22 CLUBS OF 32 ADDED 1 OR MORE NEW MEMBERS	GENDER DISTRIBUTION MALE 755 (61.18%) FEMALE 479 (38.82%)
DROPPED MEMBERS DECEASED 31 CLUB CANCELLED 16 OTHER 100 TOTAL 147	CLICK HERE FOR CUMULATIVE MEMBERSHIP DATA	TOTAL FAMILY UNIT MEMBERS 201 FAMILY MEMBERS PAYING HALF DUES 105